

Nafa Asset Allocation Fund (NAAF)



MONTHLY REPORT (MUFAP's Recommended Format)
Unit Price (31/08/2016): Rs.15.8429

August 2016

Performance %

Performance Period	Aug 2016	FYTD 2017	Rolling 12 Months Sep 15-Aug 16	FY 2016	FY 2015	FY 2014	FY 2013	FY 2012	Since Launch August 20, 2010*
NAFA Asset Allocation Fund	1.6%	6.8%	12.7%	7.6%	24.6%	13.7%	32.0%	14.4%	19.5%
Benchmark**	0.2%	2.1%	8.3%	6.2%	9.6%	15.3%	17.1%	8.1%	11.7%

* Annualized Return
All Other returns are Cumulative

The performance reported is net of management fee & all other expenses and based on dividend reinvestment gross of with-holding tax where applicable.
**From January 01, 2014, KSE-30 Total Return Index

General Information

Launch Date:	August 20, 2010
Fund Size:	Rs. 1,456 million
Type:	Open-end – Asset Allocation Fund
Dealing Days:	Daily – Monday to Friday
Dealing Time:	(Mon - Thr) 9:00 A.M to 5:00 P.M (Friday) 9:00 A.M to 5:30 P.M
Settlement:	2-3 business days
Pricing Mechanism:	Forward Pricing
Load:	Front end – 3%, (Nil on investment above Rs. 50 million) Back end – 0%
Management Fee:	2% per annum
Total Expense Ratio (%)	2.88% p.a.(including 0.38% government levies)
Risk Profile:	Moderate
Listing:	Pakistan Stock Exchange
Custodian & Trustee:	Central Depository Company (CDC)
Auditors:	Deloitte Yousuf Adil Chartered Accountants
Benchmark:	1/3 of average 3-month bank deposit rate; 1/3 of 6-month KIBOR; 1/3 of KSE 30 Total Return Index
Fund Manager:	Asim Wahab Khan, CFA, ACCA
Minimum Subscription:	Growth Unit: Rs. 10,000/- Income Unit: Rs. 100,000/-
Asset Manager Rating:	AM2++ by PACRA (High Investment Management Standards)

Investment Objective

To generate income by investing in Debt & Money Market securities and to generate capital appreciation by investing in equity and equity related securities.

Fund Manager's Commentary

During the month under review, Nafa Asset Allocation Fund's (NAAF) unit price (NAV) increased by 1.6% while the Benchmark increased by 0.2%. Thus your Fund outperformed the Benchmark by 1.4%. Since inception on August 20, 2010 the Fund has posted 193.7% cumulative return, versus 94.9% by the Benchmark. Thus, to date the cumulative outperformance of your Fund stands at 98.8%. This outperformance is net of management fee and all other expenses.

NAAF started off the month with an allocation of around 63% in equities, which decreased to around 55% towards the end of the month. NAAF outperformed the Benchmark in August as the Fund was underweight in select Commercial Banks and Fertilizer sectors stocks which underperformed the market and overweight in select Oil & Gas Exploration Companies, Engineering, Automobile Parts & Accessories, Commercial Banks, and Glass & Ceramics sectors stocks which outperformed the market. During the month, the allocation was reduced Primarily in Cement, Engineering, Power Generation & Distribution Companies, Oil & Gas Exploration Companies, and Glass & Ceramics sectors.

Asset Allocation (% of Total Assets) 31-Aug-16 29-July-16

	31-Aug-16	29-July-16
Equities / Stocks	55.1%	63.3%
Cash	41.0%	32.3%
Bank Placements	3.3%	3.8%
Others including receivables	0.6%	0.6%
Total	100.0%	100.0%
Leverage	Nil	Nil

Characteristics of Equity Portfolio***

	PER	PBV	DY
NAAF	9.1	2.7	4.8%
KSE-30	10.1	2.3	5.2%

*** Based on Nafa's estimates

Top Five Sectors (% of Total Assets) (as on 31 Aug, 2016)

Oil & Gas Exploration Companies	9.3%
Commercial Banks	8.1%
Cement	7.1%
Textile Composite	5.6%
Fertilizer	4.7%
Others	20.3%

Name of the Members of Investment Committee

Dr. Amjad Waheed, CFA
Sajjad Anwar, CFA
Syed Suleman Akhtar, CFA
Asim Wahab Khan, CFA
Muhammad Ali Bhabha, CFA, FRM

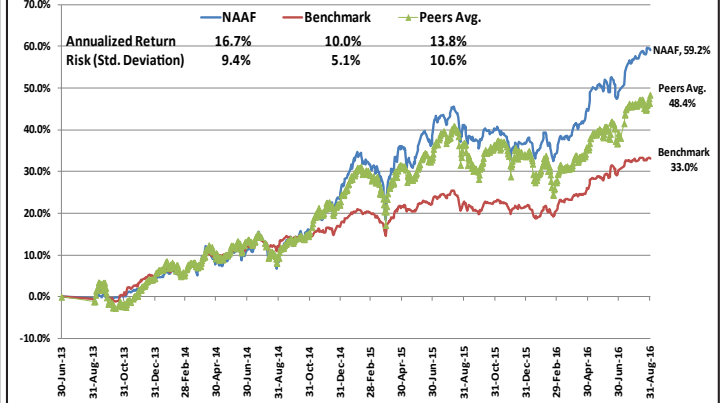
WORKERS' WELFARE FUND (WWF)

The scheme has maintained provision against Workers' Welfare Fund's liability to the tune of Rs 18,637,505/-If the same were not made the NAV per unit/ last one year return of scheme would be higher by Rs 0.2028/1.44%. For details investors are advised to read Note 5 of the Financial Statements of the Scheme for the period ended March 31, 2016. From July 01, 2015 Workers Welfare Fund (WWF) is not being charged.

Notes: 1) The calculation of performance does not include cost of front end load.
2) Taxes apply. Further, tax credit also available as per section 62 of the Income Tax Ordinance, 2001.

Disclaimer: This publication is for informational purposes only and nothing herein should be construed as a solicitation, recommendation or an offer to buy or sell any fund. All investments in mutual funds are subject to market risks. Past performance is not necessarily indicative of future results. Please read the Offering Documents to understand the investment policies and the risks involved.

Relative Performance of Nafa Asset Allocation Fund (NAAF) for the Last Three Years



Top Ten Holdings (as on 31 Aug, 2016)

Name	Asset Class	% of Total Assets
Nishat Mills Ltd	Equity	2.9%
Mari Petroleum Company Ltd	Equity	2.8%
Tariq Glass Ltd	Equity	2.7%
Kohinoor Textile Mills Ltd	Equity	2.6%
Indus Motor Company Ltd	Equity	2.5%
Pakistan Oilfields Ltd	Equity	2.4%
Pak Petroleum Ltd	Equity	2.4%
Engro Fertilizer Ltd	Equity	2.3%
Thal Ltd	Equity	2.3%
Lucky Cement Ltd	Equity	2.1%
Total		25.0%