

Performance %

Performance Period	Apr 2019	FYTD 2019	Rolling 12 Months	FY 2018	FY 2017	FY 2016	FY 2015	FY 2014	Last 3 Years*	Last 5 Years*	Last 10 Years*	Since Launch January 19, 2007*
NAFA Stock Fund	(5.2%)	(10.9%)	(16.6%)	(9.7%)	33.7%	11.4%	36.9%	36.3%	4.4%	11.0%	19.6%	13.6%
Benchmark**	(4.5%)	(11.4%)	(18.0%)	(10.0%)	17.9%	7.1%	12.3%	29.6%	0.5%	2.9%	11.9%	4.8%

* Annualized Return

All Other returns are Cumulative

The performance reported is net of management fee & all other expenses and based on dividend reinvestment gross of with-holding tax where applicable.

**From January 01, 2014, KSE-30 Total Return Index

General Information

Launch Date:	January 19, 2007
Fund Size:	Rs. 13,306 million
Type:	Open-end – Equity Fund
Dealing Days:	Daily – Monday to Friday
Dealing Time:	(Mon-Thr) 9:00 A.M to 4:30 P.M (Friday) 9:00 A.M to 5:00 P.M
Settlement:	2-3 business days
Pricing Mechanism:	Forward Pricing
Load:***	Front End Load (Individual): 3% (Nil on investment above Rs. 101 million) Front End Load (Other): 3% (Nil on investment above Rs. 50 million) Back End Load: NIL
Management Fee:	2% per annum
Total Expense Ratio (%)	3.16% p.a.(including 0.37% government levies)
Selling & Marketing Expenses	0.4% per annum
Risk Profile:	High
Listing:	Pakistan Stock Exchange
Custodian & Trustee:	Central Depository Company (CDC)
Auditors:	KPMG Taseer Hadi & Co, Chartered Accountants
Benchmark:	KSE-30 Total Return Index
Fund Manager:	Taha Khan Javed, CFA
Minimum Subscription:	Growth Unit: Rs. 10,000/- Income Unit: Rs. 100,000/-
Asset Manager Rating:	AM1 by PACRA (Very High Quality)

*** effective from January 02, 2017

Asset Allocation (% of Total Assets)

	30-Apr-19	29-Mar-19
Equities / Stock	90.2%	88.8%
Cash	9.1%	8.2%
Others including receivables	0.7%	3.0%
Total	100.0%	100.0%
Leverage	Nil	Nil

Characteristics of Equity Portfolio****

	PER	PBV	DY
NSF	7.1	1.4	6.0%
KSE-30	7.1	1.5	7.2%

**** Based on NBP Funds estimates

Top Five Sectors (% of Total Assets) (as on April 30, 2019)

Commercial Banks	29.8%
Oil & Gas Exploration Companies	17.6%
Fertilizer	14.0%
Textile Composite	7.5%
Cement	4.7%
Others	16.6%

Sindh Workers' Welfare Fund (SWWF)

The Scheme has maintained provisions against Sindh Worker's Welfare Fund's liability to the tune of Rs. 108,972,307/- if the same were not made the NAV Per unit/Last one year return of the Scheme would be higher by Rs. 0.1067/0.68%. For details investors are advised to read the Note 5 of the latest Financial Statements of the Scheme.

Notes: 1) The calculation of performance does not include cost of front end load.
2) Taxes apply. Further, tax credit also available as per section 62 of the Income Tax Ordinance, 2001.

Investment Objective

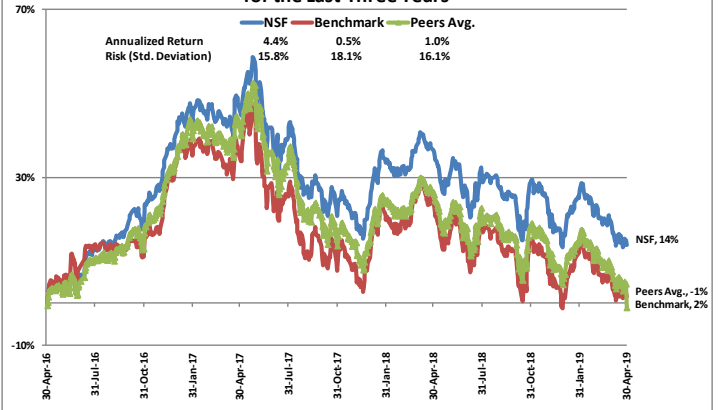
To provide investors with long term capital growth from an actively managed portfolio invested primarily in listed companies in Pakistan. The risk profile of the Fund will be moderate to high.

Fund Manager's Commentary

During the month under review, NAFA Stock Fund's (NSF) unit price (NAV) decreased by 5.2%, whereas the Benchmark decreased by 4.5%, thus an underperformance of 0.7% was recorded. Since inception on January 19, 2007 your Fund has posted 13.6% p.a return, versus 4.8% p.a, by the Benchmark. Thus, to-date the outperformance of your Fund stands at 8.8% p.a. This outperformance is net of management fee and all other expenses.

NSF started off the month with an allocation of around 89% in equities, which increased to around 90% towards the end of the month. NSF underperformed the Benchmark in April as the Fund was underweight in select Commercial Banks and Power Generation & Distribution Companies sectors stocks which outperformed the market and overweight in select Cement, Engineering, Technology & Communication, and Paper Board sectors stocks which underperformed the market. During the month, the allocation was increased primarily in Commercial Banks, Fertilizer, and Power Generation & Distribution Companies sectors, whereas it was reduced primarily in Cement, Engineering, and Oil & Gas Marketing Companies sectors.

Relative Performance of NAFA Stock Fund (NSF) for the Last Three Years



Top Ten Equity Holdings (as on April 30, 2019)

Name	% of Total Assets	Name	% of Total Assets
Bank Al-Falah Ltd	5.9%	Oil & Gas Dev Co Ltd	5.2%
Pak Petroleum Ltd	5.8%	Engro Corporation Ltd	5.0%
Fauji Fertilizer Co. Ltd	5.6%	Bank AL-Habib Ltd	4.7%
United Bank Ltd	5.5%	Hub Power Company Ltd	4.0%
Habib Bank Ltd	5.3%	Mari Petroleum Company Ltd	3.5%

Name of the Members of Investment Committee

Dr. Amjad Waheed, CFA
 Sajjad Anwar, CFA
 Taha Khan Javed, CFA
 Hassan Raza, CFA